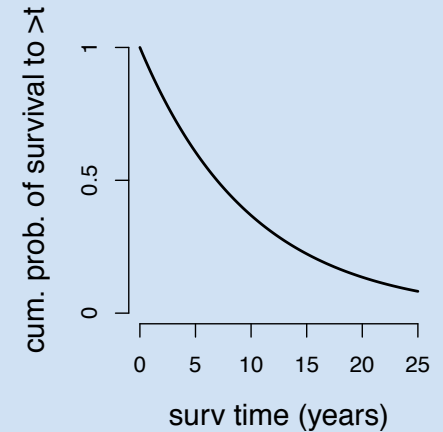
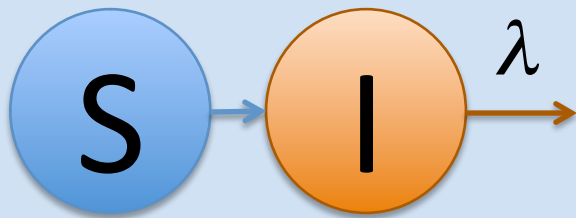


# Justification of the Distributed Delay (Boxcar Model)

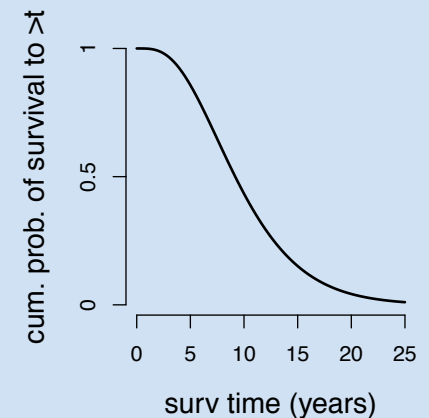
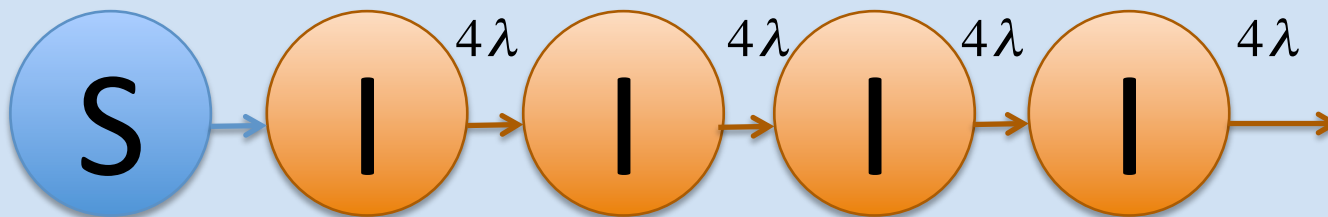
Exponential survival:

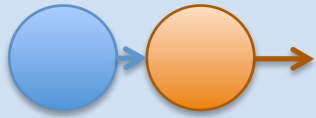


---

Gamma survival:

Average rate is the same, distribution is different!

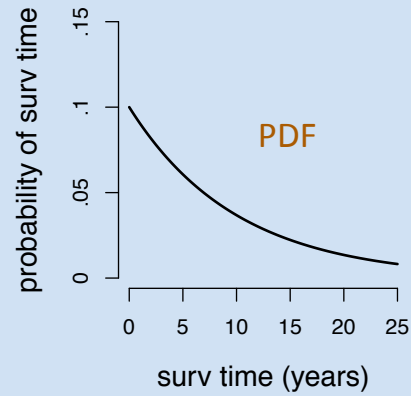




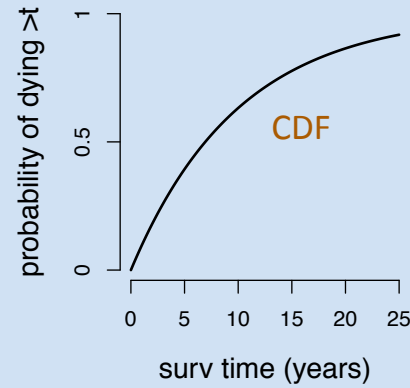
# Exponential Survival Times



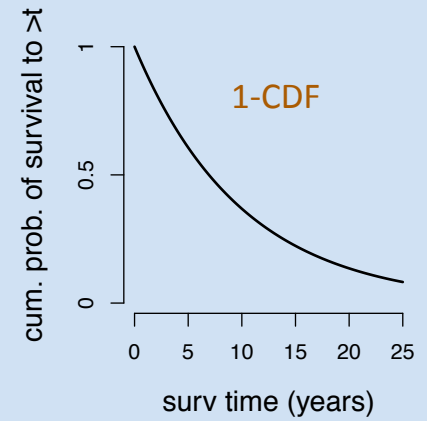
hazard of mortality:  
deaths / (person\*year)



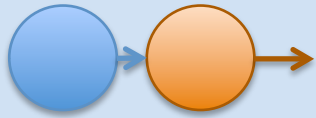
probability of  
dying AT year t



probability of  
dying BY year t



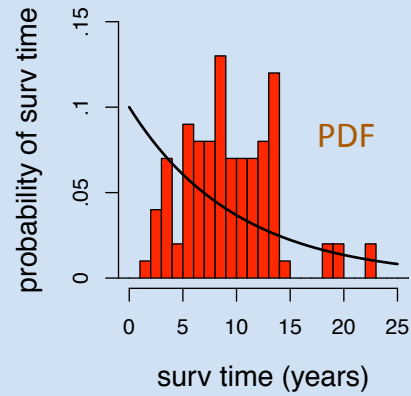
probability of  
surviving PAST year t



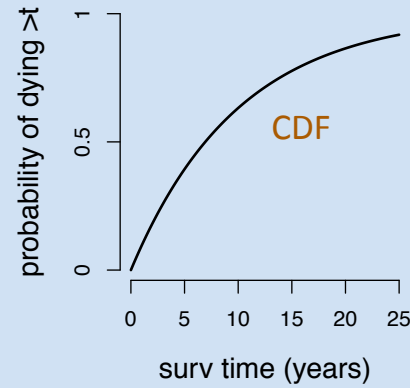
# Exponential Survival Times



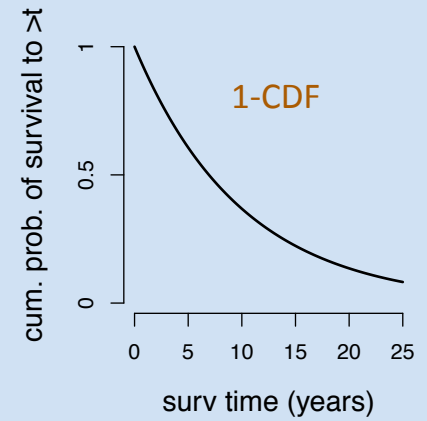
hazard of mortality:  
deaths / (person\*year)



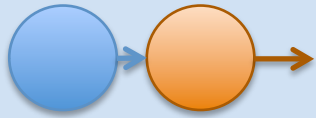
probability of  
dying AT year t



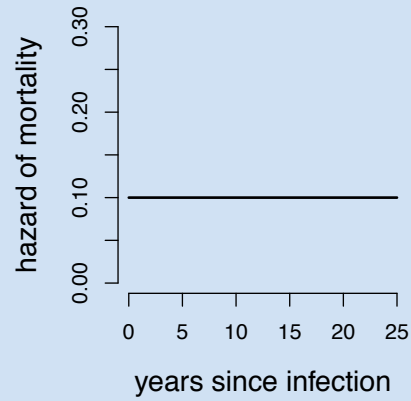
probability of  
dying BY year t



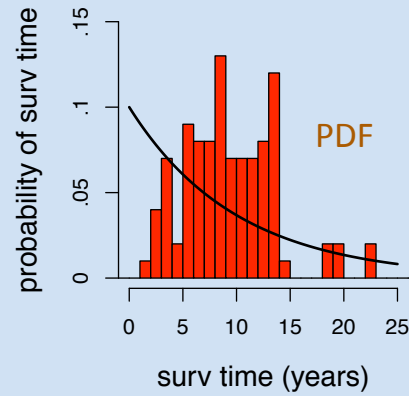
probability of  
surviving PAST year t



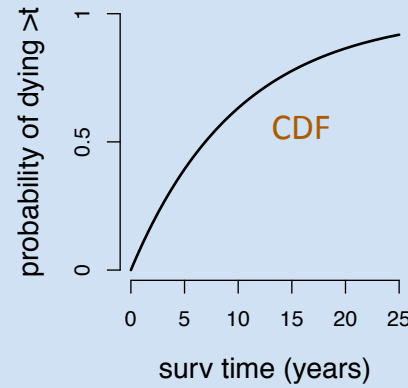
## Exponential Survival Times



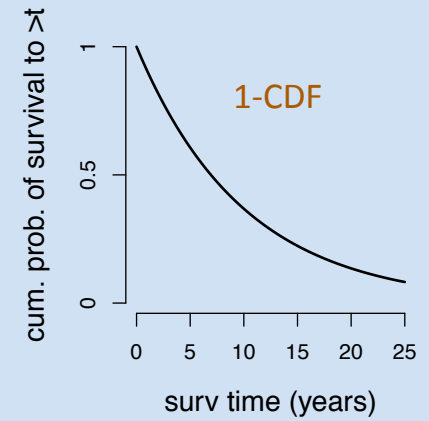
hazard of mortality:  
deaths / (person\*year)



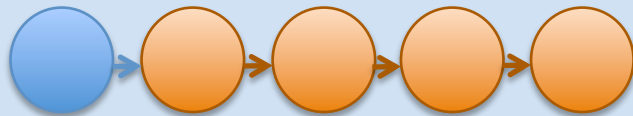
probability of  
dying AT year t



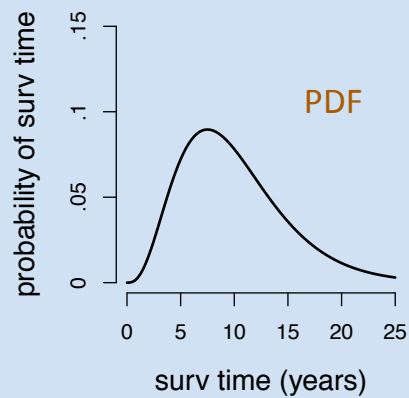
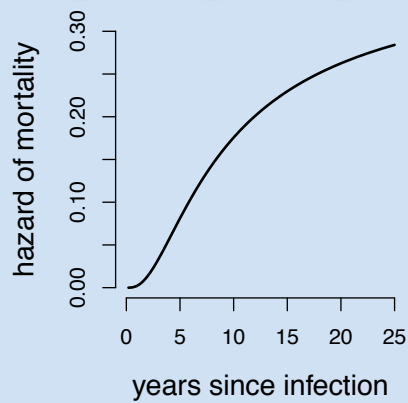
probability of  
dying BY year t

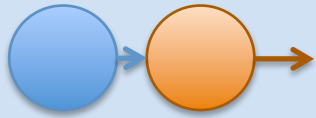


probability of  
surviving PAST year t



## Gamma Survival Times

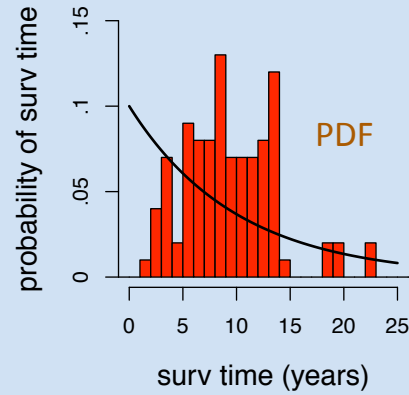




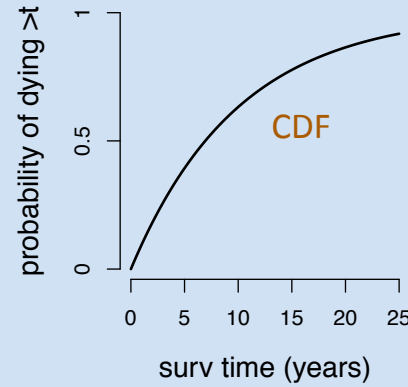
## Exponential Survival Times



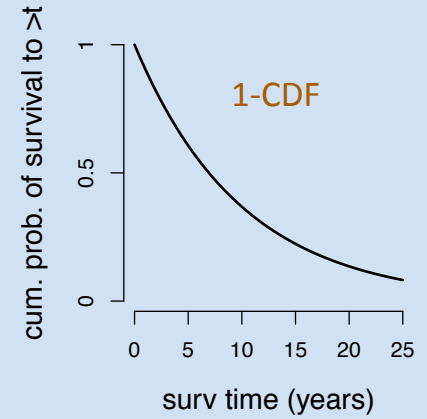
hazard of mortality:  
deaths / (person\*year)



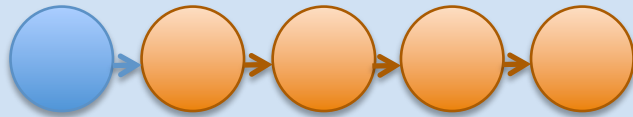
probability of  
dying AT year t



probability of  
dying BY year t



probability of  
surviving PAST year t



## Gamma Survival Times

